
BUILDING BRIDGES WITH EDUCATION DATA

Paul Palmer
Director of Business Strategy



HISTORY AND CONTEXT

Parental Engagement

GDPR Services

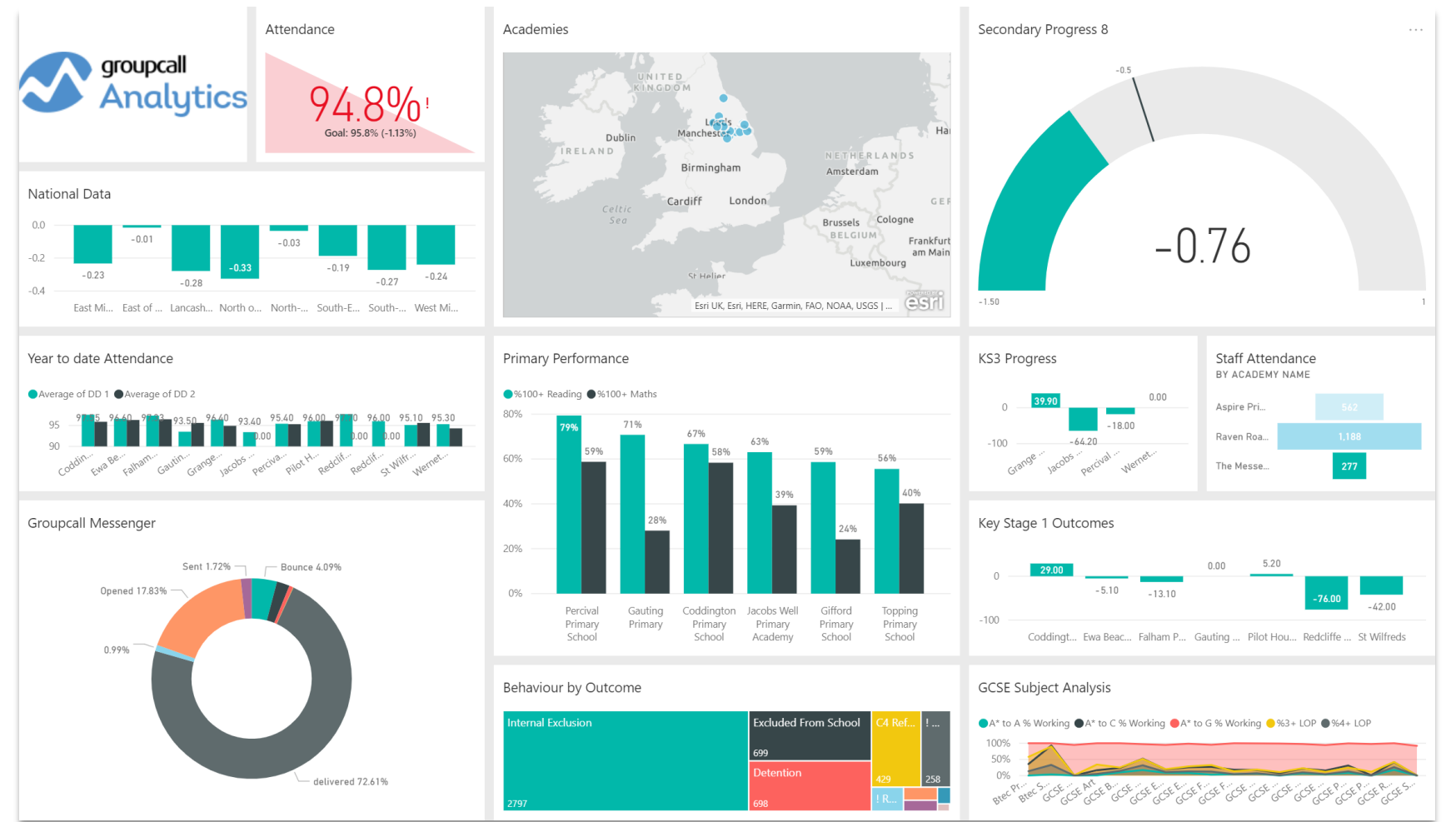
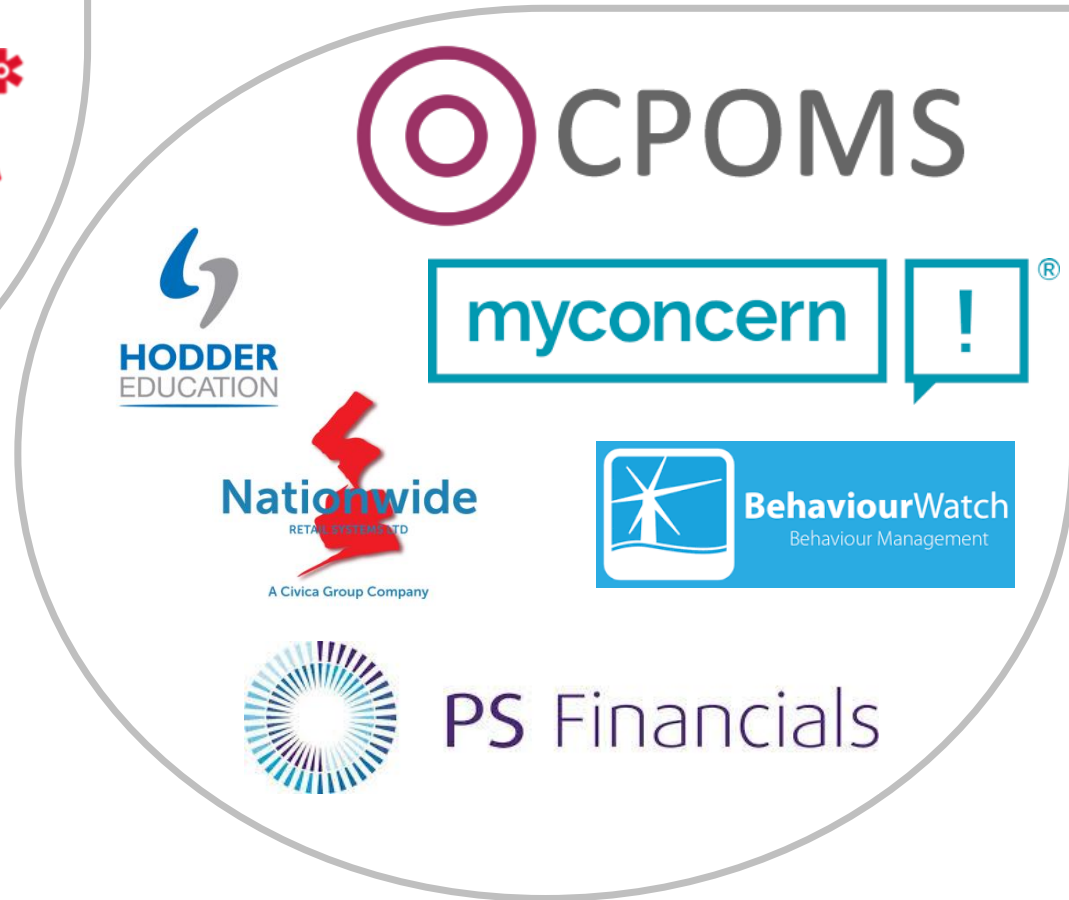
Safeguarding

Education Data Analytics

EdTech Partner Integration

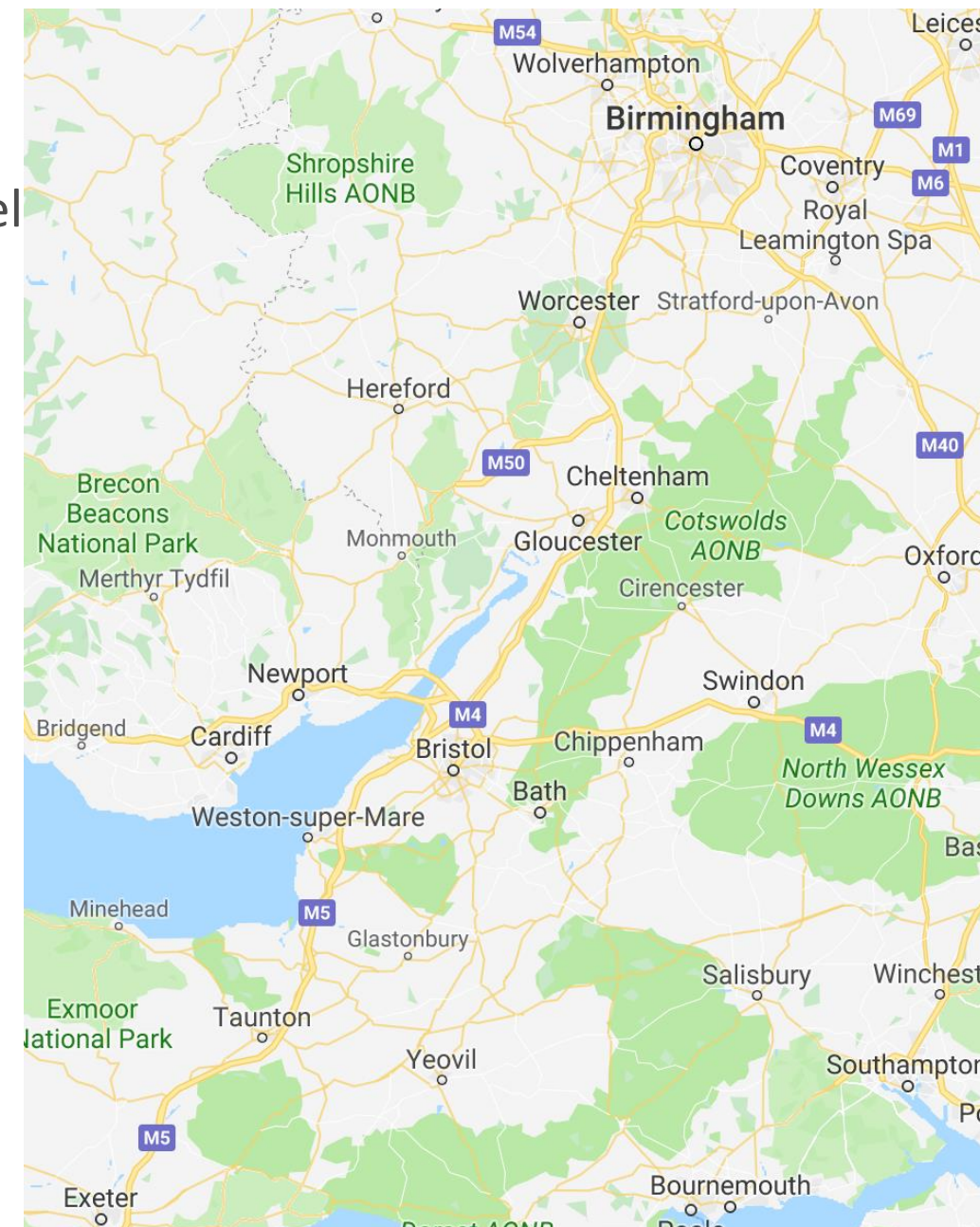
The screenshot shows the homepage of the Child Rescue Alert website. At the top left is the 'child rescue alert' logo. To the right are logos for 'NCA National Crime Agency', 'missing people', and 'groupcall™ built on trust'. A navigation bar contains links for 'HOME', 'ABOUT US', 'PARTNERS', 'SUPPORTERS', and 'RESOURCES', along with social media icons for Facebook and Twitter. A banner at the top reads 'Act now. It's free! You could save a child's life' with 'Register' and 'FAQs' buttons. The main content area features a large video player titled 'CHILD RESCUE ALERT' with a 'Join the Child Rescue Alert team' message and a 'TEST HERO AND YOUR POSTCODE TO 85080' call to action. To the right of the video is a text block explaining the service and a large red 'Register Now' button. On the far right, there are several logos of funders: 'PEOPLE'S POSTCODE LOTTERY', 'POSTCODE DREAM TRUST', 'Royal Mail 2018 Funder', and 'Microsoft Azure'. At the bottom right are 'GET IT ON Google play' and 'Download on the App Store' buttons. A red banner at the bottom of the page reads '16 YEAR OLD GIRL STILL MISSING'.

MAT & SCHOOL DATA LANDSCAPE



DATA CHALLENGES

- Project to support MATs around student exploitation threats – “How do we identify our next level of at risk students”?
- Geographical landscape – different priorities across the country
- Multiple LAs covering multiple academy sites
- 360° view of the student hindered by historic processes or service cuts
- Sharing of intelligent data across agencies may be limited or non-existent
- Information typically shared after an event – limited intervention opportunities
- No formal data sharing model really exists between MATs & LAs
- Limited visibility of external factors concerning a pupil – social & environmental



JOINING DATA FROM MULTIPLE SOURCES

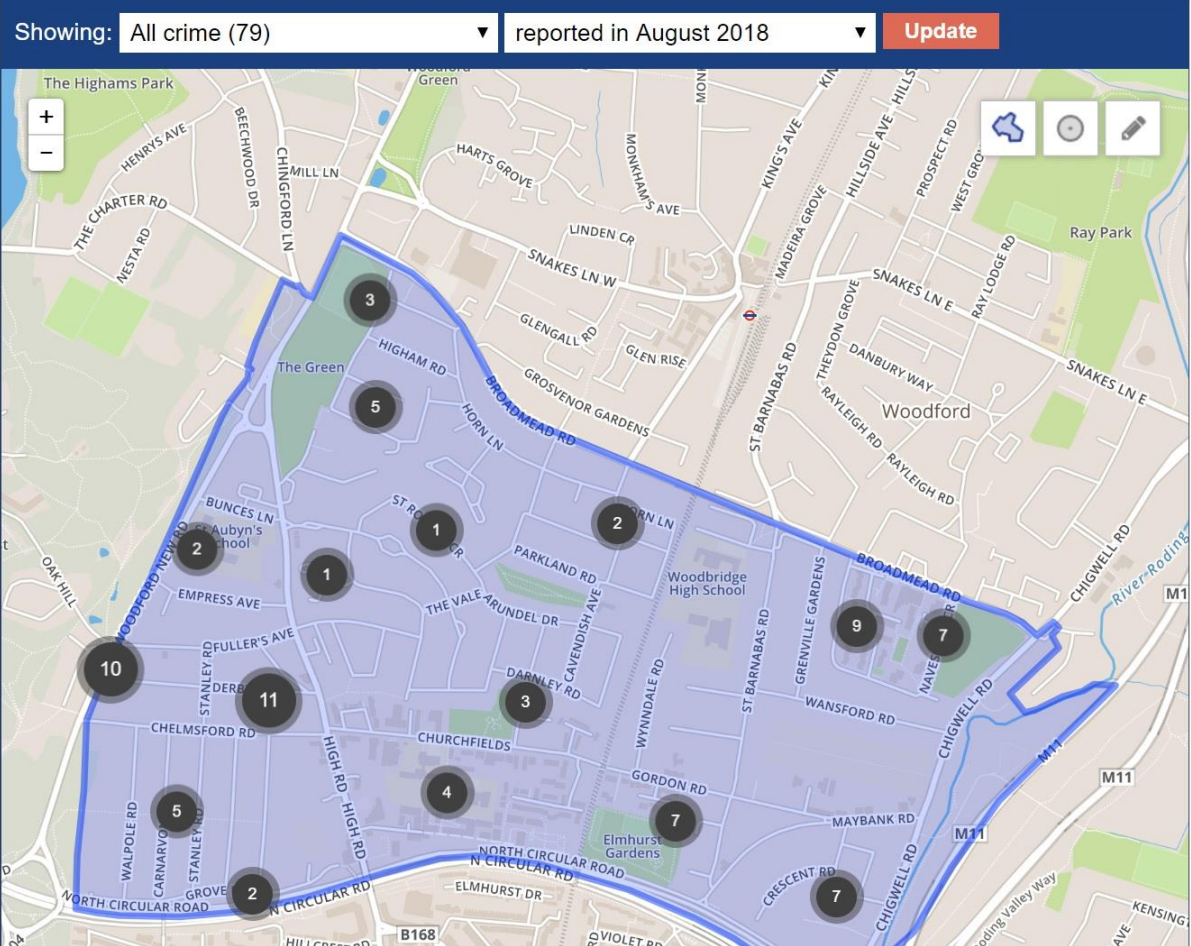
POLICE.UK
Find your neighbourhood 🔍 Share this page 🔄 Menu ☰

Home > Metropolitan Police Service > Churchfields >

Crime map

Click on the dots on the map for information about individual crimes.

Showing: All crime (79) ▾
reported in August 2018 ▾
Update

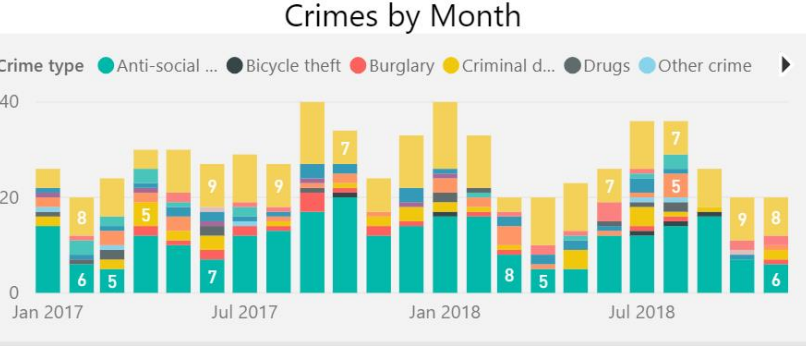


School Name
Distance From School

Nottingham Academy

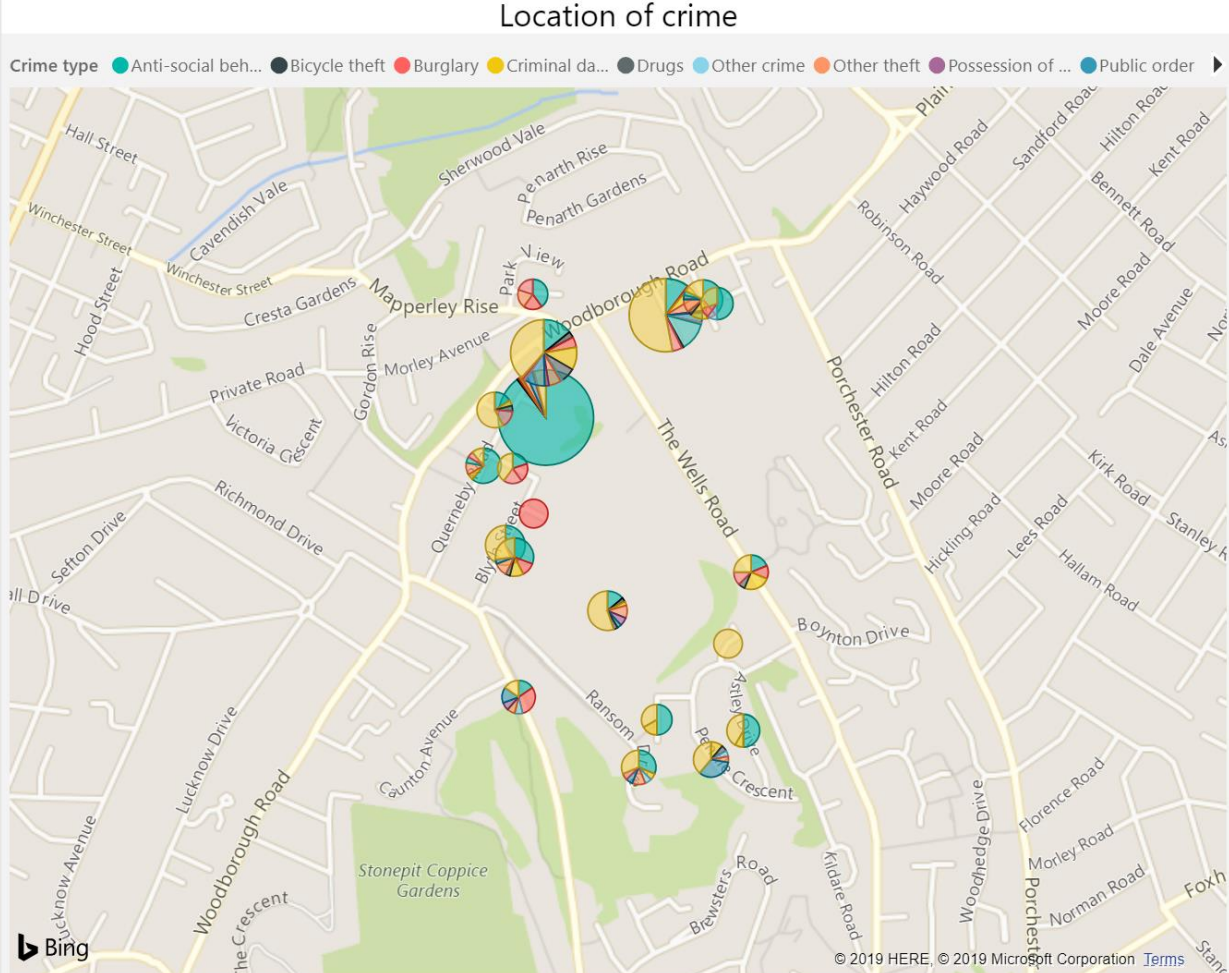
Crimes by Month

Crime type ● Anti-social ... ● Bicycle theft ● Burglary ● Criminal d... ● Drugs ● Other crime



Location of crime

Crime type ● Anti-social beh... ● Bicycle theft ● Burglary ● Criminal da... ● Drugs ● Other crime ● Other theft ● Possession of ... ● Public order



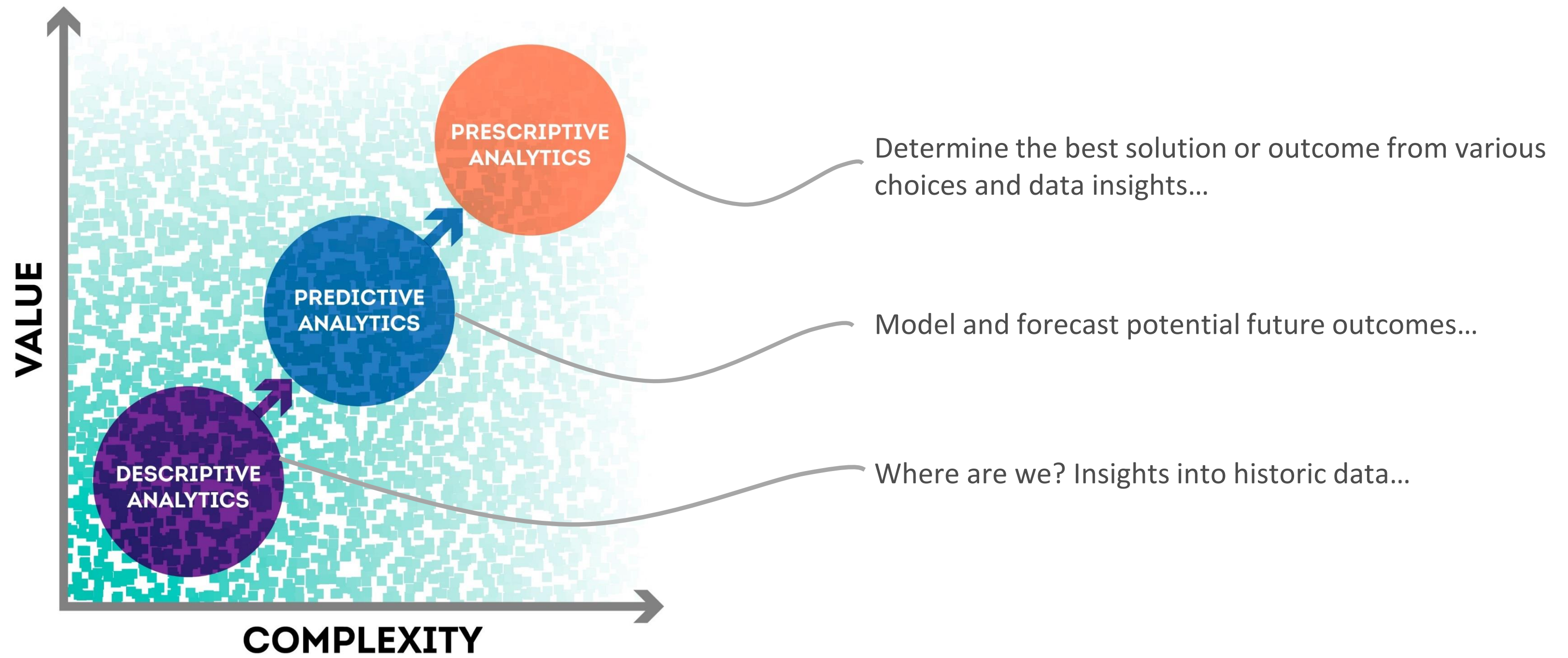
Crime Type

- Anti-social behaviour
- Bicycle theft
- Burglary
- Criminal damage and arson
- Drugs
- Other crime
- Other theft
- Possession of weapons
- Public order
- Robbery
- Shoplifting
- Theft from the person
- Vehicle crime
- Violence and sexual offences

Location

- On or near The Wells Road
- On or near Staples Street
- On or near Sports/Recreation Area
- On or near Ransom Road
- On or near Ransom Drive
- On or near Querneby Road
- On or near Querneby Avenue
- On or near Pendle Crescent
- On or near Park Close
- On or near Mission Street
- On or near Hazelbank Avenue
- On or near Coppice Grove
- On or near Chertsey Close
- On or near Blyth Street
- On or near Blyth Gardens
- On or near Bennett Street
- On or near Belvoir Street

HOW CAN WE BETTER SUPPORT MATS AND DATA STRATEGIES?



QUESTIONS FOR DISCUSSION



Realising the potential of technology in education



Realising the potential of technology in education: A strategy for education providers and the technology industry

Our aim is to support the education sector in England to develop and embed technology in a way that cuts workload, fosters efficiencies, supports inclusion and ultimately drives improvements in educational outcomes. Schools, colleges, universities and other providers face a range of barriers to supporting and integrating the good use of technology. This strategy aims to help address these barriers.

Commitments to support the use of technology in education:

Securing the digital infrastructure



- ! Get the connectivity right** – many education providers struggle with slow internet connections and outdated internal networking and devices. So we:
 - ✓ Are working with industry to accelerate the rollout of full-fibre internet connectivity to schools most in need.
 - ✓ Encourage providers with good broadband connections to move to a cloud based approach for their IT system.
 - ✓ Support Jisc to provide full-fibre connections through their Janet network to colleges and universities.
 - ✓ Have published guidance documents covering the key questions and issues to consider when implementing technology infrastructure.

Developing digital capability and skills

- ! Set a vision, know the outcomes you want to achieve and ensure staff have the right skills** – it can be hard to know where to start and to get the implementation right. So we:
 - ✓ Will launch a network of technology ‘demonstrator schools and colleges’ to provide peer-to-peer support and training.
 - ✓ Support ‘LearnEd’, BESA’s regional EdTech roadshows to showcase products and services and facilitate learning from other education leaders.
 - ✓ Have worked with the Chartered College of Teaching to launch online training

<https://www.gov.uk/government/publications/realising-the-potential-of-technology-in-education>

‘A strategy for education providers and the technology industry to help improve and increase the effective use of technology in education’.

Developing
digital
capability
and skills



Please discuss and share examples of how your organisation develops its staff around digital skills and capabilities



**A vibrant
market for
EdTech
products and
services**



How do you engage with the 'EdTech' industry to help drive your strategy or to gather evidence for your MAT?