

27
June
2024

.....
Voco St John's Solihull

Improve strategy across
your trust and learn from
the impact achieved by
trusts recognised through
the MAT Excellence Awards.

Sponsored by



MAT Excellence in Action

With thanks to The MAT Excellence 2024 shortlisted trusts



SPECIAL GUEST SPEAKER

Sir Steve Lancashire
Executive Coach and Mentor

Quality

Unpack models of organisational strength from across the country.

Discuss

Share different models of working in expert facilitated discussions.

Reflect

Leave inspired by cutting edge practice from the sector to make a difference.



Index

Welcome >>

Programme >>

Speakers >>

Upcoming conferences >>

MATs in attendance >>

Venue >>

Exhibitors >>

Become a member

Join the UK's largest community of teachers, middle and senior leaders.
Find the membership that's right for your school or trust.

	PREMIUM	ELITE
Unique log in for every member of staff at your school	✓	✓
50+ ready-made in-house CPD training courses	✓	✓
Individual CPD record for every user with My CPD Tracker	✓	✓
Assign and track staff CPD in your school with the School CPD Tracker	✓	✓
Model policies approved by lawyers Browne Jacobson LLP	✓	✓
Articles, toolkits, year planners, skills audits and guidance	✓	✓
Your questions answered by our panel of experts	✓	✓
Support from your own Optimus Education account manager	✓	✓
25% off our national and digital conferences	✓	✓
More than 100 expert-led webinars	✓	✓
10 places at our digital conferences plus 50% off any further delegates*	✗	✓
10 places at face-to-face conferences plus 50% off any further delegates**	✗	✓
Access to all conference resources	✗	✓

*Includes one free place at up to 10 conferences, with 50% off any further delegate places

**Includes one free place at any of our conferences, with 50% off any further delegate places

**Visit the Optimus Education stand today
or call **020 8315 1506****

optimus-education.com/membership

Welcome

to MAT Excellence in Action. We're delighted to see you!

Which workshop did I choose?

Your workshop choices are printed on your badge. If you wish to change sessions, or have any enquiries, visit our registration desk.

General enquiries

Need any help? Visit our registration desk. Remember to take good care of any valuables as neither the venue nor Optimus Education can be responsible for any loss or damage.

What else does Optimus Education do?

You can find out more about Optimus Education, our membership, awards, and in-house training centre at our stand.

Your views matter

Please complete your evaluation form and hand it in to the registration desk at the end of the day.

We really do appreciate your feedback as it helps to inform our future events and further improve conferences to best suit your needs.

What's coming up?

Visit my.optimus-education.com

Don't hesitate to get in contact if you have any questions, want to book your next conference, or receive any further information about Optimus Education:

conference.bookings@optimus-education.com

+44 (0) 20 8315 1506

Access today's speaker slides

A copy of the presentations from every speaker is available for you in the resource area.

Visit: oego.co/MAT-Excellence-in-Action

Click Access Resources

Log in with your usual Optimus details.

Don't have an account yet?

Click **create a free delegate account** to get set up.

Be sure to register with the email address used to book your conference place.

You'll receive an email with a one-time link which will take you into your new account.

Programme

09:30 – 10:00 Registration and refreshments

10:00 – 10:05 Welcome and Housekeeping

10:10 – 10:55 Discussion sessions one

1A – BRUETON

Inclusivity

Hosted by Balanced People

Develop a successful collaborative review process in your setting highlighted by a real working case study.

Rob Bell, Headteacher, Consilium Academies

Josh Coleman, CEO, East Midlands Academy Trust

Garry Ratcliffe, CEO, The Golden Thread Alliance

Gemma Bolton-Hale, Curriculum Leader, Oasis Community Learning

David Williams, Executive Director of Inclusions, The Park Academies Trust

1B – GLOUCESTER

Financial strategy

Hosted by Fusion Business Solutions

Drive efficiencies as a successful CFO.

Phil Reynolds, CFO, The Island Learning Trust

Marc Goodey, CFO, Transforming Lives Educational Trust

Paul Scaife, CFO, Embark Federation

Liam Knowles, CFO, Leading Learners Multi-Academy Trust

Nicola Winstanley, CFO, The Wings' CE Trust

1C – EVERSFIELD

Digital innovation

Enhance your digital initiatives and drive learning outcomes.

James Gabrielides, Headteacher, Vision Multi Academy Trust

10:55 – 11:35 Morning refreshments, networking and exhibition

11:35 – 12:20 Discussion sessions two

2A – BRUETON

Staff development

Hosted by Supporting Education Group

What makes an effective whole-staff development programme?

Peter Mayland, CEO, Albany Learning Trust

Sally Johnson, ECT/ITT and CPD Coordinator, Heart of Mercia Multi-Academy Trust

James Kendall, Deputy CEO, The Golden Thread Alliance

Claire Arnold, School Improvement Lead – Primary,

Lisa Finnegan, Deputy CEO, Oak Trees Multi Academy Trust

Alex Petrie, Director of Curriculum, Lionheart Educational Trust

2B – EVERSFIELD

Wellbeing

Hosted by The Happy Confident Company

Nurture wellbeing across your trust.

Sarah Orves, Complete Human Strategy Lead, ASSET Education

Nicky Wise, COO, Leanne Frankish, Wellbeing Development Officer, Victorious Academies Trust

Sam Garner, Wellbeing Consultant

2C – GLOUCESTER

Transformation and impact

Hosted by Education Development Trust

Overcome challenges and benefit your whole school community.

Neil Miller, Deputy CEO, London South East Academies Trust

Karen Bramwell, CEO, Forward as One CE Multi Academy Trust

Rachael Coulthard, Chief Executive Officer, The Wings' CE Trust

Victoria Hartford, Director of Primary, Carlton Academy Trust

12:20 – 13:05 Lunch, networking and exhibition

13:05 – 13:50 Discussion sessions three

3A – BRUETON

Strategic leadership

Hosted by SupplyWell

Lead and inspire your trust with impact as a CEO.

Emma Wigmore, CEO, Vine Schools Trust

Michael Thorp, CEO, Pennine Academies Yorkshire

Matthew Crawford, CEO, Embark Federation

Daniel Parkes, CEO, The Mercian Trust

3B – EVERSFIELD

Environmental impact

Reduce your trust's carbon footprint and shape a sustainable future.

Fabrice Vinson, Director of Estates, Ormiston Academies Trust

Rebecca Grange, Executive Director of Operations, Leger Education Trust

Jack Warren, Head of Estates, Archway Learning Trust

Chris Berry, Director of Operations, Windsor Academy Trust

3C – GLOUCESTER

Community

Hosted by GovernorHub

Engage in positive partnerships with your community.

Nick Osborne, CEO, Susan Matheson, COO and Katie-Louise Lawrence, Community Engagement Officer, Maritime Academy Trust

Marino Charalambous, Chief Executive Officer, North Star Community Trust

Claire Gething, Director of Communication, Windsor Academy Trust

Mark Oldman, Director of Education, The Mead Education Trust

Lucie Hamblin, Communications Lead, South Downs Learning Trust

13:50 – 14:10 Afternoon refreshments, networking and exhibition

14:10 – 14:30 Who would want to work in education?

Understand today's workforce and gain strategies on how to catch 'em and keep 'em.

Penny Swain, Education Talent Solutions Director, Supporting Education Group

14:30 – 15:00 Leadership mindsets and practices for a new era

In a dynamic, complex educational landscape, what now for leadership? Is a new kind of leader required?

Sir Steve Lancashire, Executive Coach and Mentor

15:00 Conference closes

Speakers



Steve Lancashire

Executive Coach and Mentor

Steve Lancashire, founder, and former CEO of REAch2, the largest primary academy trust in England, has more than 35 years of experience in education, including 20 years as a headteacher. Knighted in 2016 for his significant contributions, he has worked both nationally and internationally as a national leader of education and lead adviser for the UK Department for Education's London Challenge. Steve specialises in executive coaching, mentoring, and multi-academy trust development. Steve recently authored Reflections on Being the CEO, a book that explores leadership challenges and opportunities in public sector management. Currently, Steve consults as an educational leadership consultant, enhancing leadership skills and strategic capabilities across UK MATs and businesses.



Penny Swain

Education Talent Solutions Director, Supporting Education Group

Penny is education talent solutions director for Supporting Education Group, a school services business working with 90% of MATs across England. With 30 years in the education sector, a qualified secondary science teacher and MAT trustee, she has previously taught science in mainstream and AP in Kent and Newham. Penny now supports MATs and schools with understanding their current people challenges and brings together market-leading specialists in workforce resourcing, staff training and system solutions. With a strong people strategy, schools are able to attract, recruit, retain, develop and manage their great people to best support the progress of their pupils.

With thanks to all our speakers:

Claire Arnold, School Improvement Lead – Primary, Oak Trees Multi Academy Trust

Rob Bell, Headteacher, Consilium Academies

Chris Berry, Director of Operations, Windsor Academy Trust

Gemma Bolton-Hale, Curriculum Leader, Oasis Community Learning

Karen Bramwell, CEO, Forward as One CE Multi Academy Trust

Matthew Bulpitt, Deputy CEO, Maritime Academy Trust

Marino Charalambous, CEO, North Star Community Trust

Josh Coleman, CEO, East Midlands Academy Trust

Rachael Coulthard, Chief Executive Officer, The Wings' CE Trust

Matthew Crawford, CEO, Embark Federation

Lisa Finnegan, Deputy CEO, Oak Trees Multi Academy Trust

Leanne Frankish, Wellbeing Development Officer, Victorious Academies

James Gabrielides, Headteacher, Vision Multi Academy Trust

Sam Garner, Wellbeing Consultant, Balanced People

Claire Gething, Director of Communication, Windsor Academy Trust

Marc Goodey, CFO, Transforming Lives Educational Trust

Rebecca Grange, Executive Director of Operations, Leger Education Trust

Lucie Hamblin, Communications Lead, South Downs Learning Trust

Victoria Hartford, Director of Primary, Carlton Academy Trust

Sally Johnson, ECT/ITT and CPD Co-ordinator, Heart of Mercia multi-academy trust

James Kendall, Deputy CEO, The Golden Thread Alliance

Liam Knowles, CFO, Leading Learners Multi-Academy Trust

Susan Matheson, COO, Maritime Academy Trust

Peter Mayland, CEO, Albany Learning Trust

Neil Miller, Deputy CEO, London South East Academies Trust

Mark Oldman, Director of Educaiton, The Mead Education Trust

Sarah Orves, Complete Human Strategy Lead, ASSET Education

Nick Osborne, CEO, Maritime Academy Trust

Daniel Parkes, CEO, The Mercian Trust

Alex Petrie, Director of Curriculum, Lionheart Educational Trust

Garry Ratcliffe, CEO, The Golden Thread Alliance

Phil Reynolds, CFO, The Island Learning Trust

Paul Scaife, CFO, Embark Federation

Michael Thorp, CEO, Pennine Academies Yorkshire

Fabrice Vinson, Director of Estates, Ormiston Academies Trust

Jack Warren, Head of Estates, Archway Learning Trust

Emma Wigmore, CEO, Vine Schools Trust

David Williams, Executive Director of Inclusion, The Park Academies Trust

Nicola Winstanley, CFO, The Wings' CE Trust

Nicky Wise, Chief Operations Officer, Victorious Academies Trust



Bespoke external audits

Why choose us?

Our skilled consultants take the time to understand your unique challenges and work with you to outline areas of development.

Schools will receive a detailed report capturing the strengths and areas for development which will have been agreed with leaders during the visit. Practical recommendations will also be included.

What others say

'From the initial email enquiring about taking part in a bespoke audit, to the report being received, the whole process was efficient, personal and user-friendly. The audit itself was excellent and was bespoke for mine and the school's needs.'

- Deputy Headteacher

Our packages include but are not limited to:



safeguarding review



curriculum review



teaching and learning audits



school improvement review



leadership review.



Upcoming conferences

Optimus Education's conferences bring school leaders and managers together, helping you go back to your MAT or school ready to implement practical strategies and new policies that work.

September 2024

Child Protection in Education

17 SEPTEMBER, LONDON

Unpack the Department for Education advice and guidance and take away proven strategies and resources to implement.

#CPinEd

October 2024

Child Protection in Education

1 OCTOBER, MANCHESTER

Unpack the Department for Education advice and guidance and take away proven strategies and resources to implement.

#CPinEd

November 2024

Mental Health & Wellbeing in Schools

15 NOVEMBER, LONDON

Confidently lead mental health and wellbeing provision to enable your staff and students to thrive.

#oeWellbeing

SEND Digital

NOVEMBER

Develop your strategic oversight of SEND and lead an inclusive culture that allows your pupils and team to thrive.

#oeSEND

MATs Summit

27-29 NOVEMBER, WYBOSTON LAKES

The flagship summit for multi-academy trusts of all sizes. The two-day programme is exclusively designed for executive offices within MATs, influenced by extensive research and feedback from across the sector.

#oeMATs

February 2025

NCGS South West

6 FEBRUARY, EXETER

Annual convention for people passionate about careers

#NCGS2025

NCGS North

FEBRUARY, LEEDS

Annual convention for people passionate about careers

#NCGS2025

March 2025

Inclusion Summit

12 MARCH, LONDON

Lead an inclusive school so all students can thrive.

MAT C-Suite conference

12 MARCH, LONDON

#oeMATs

MAT C-Suite conference

13 MARCH, MANCHESTER

#oeMATs

April 2025

NCGS London

1 APRIL, LONDON

Annual convention for people passionate about careers

#NCGS2025

May 2025

HR Update

20 MAY, LONDON

Deepen and enrich your inclusion and wellbeing strategy and culture, evidence impact, and ensure everyone thrives.

#oeHR

MATs in attendance

Ace Learning
Albany Learning Trust
All Saints Multi Academy Trust
Archway Learning Trust
ARK Schools
Aspin Park Academy
ASSET Education
Aston Community Education Trust
Avanti Schools Trust
Blessed Peter Snow Catholic Academy Trust
Brunel Academies Trust
Carlton Academy Trust
Chiltern Learning Trust
Consilium Academies
Cumbria Education Trust
East Midlands Academy Trust
Embark Federation
Empower Learning Academy Trust
Forward As One Church of England Multi Academy Trust
Forward Education Trust
Greenshaw Learning Trust
Haberdashers Academies Trust South
Heart of Mercia Multi-Academy Trust
Inspiring Leaders
Inspiring Primaries Academy Trust
Leading Learners Multi Academy Trust
Learning Academies Trust
Leger Education Trust
Life Education Trust
Lionheart Educational Trust
London South East Academies Trust
Maritime Academy Trust
Meridian Trust
Meridian Trust
Nishkam Schools Multi-Academy Trust
North Star Community Trust
OAK Multi Academy Trust
Oak Trees Multi Academy Trust
Oasis Community Learning
Ormiston Academies Trust
Palladian Academy Trust
Park Academies Trust
Pendle Education Trust
Pennine Academies Yorkshire
Perry Hall Multi-Academy Trust
Pontefract Academies Trust
Preston Hedges Trust
Prince Regent Street Trust
R N I B (Royal National Institute of Blind People)
South Downs Learning Trust
St Chad's Academies Trust
St. John Paul II Multi Academy
St. Mary's Academy Trust
Stowe Valley Multi Academy Trust
The Diocese of Coventry Multi-Academy Trust
The Golden Thread Alliance
The Howard Academy Trust
The Howard Partnership Trust
The Laurus Trust
The Mead Educational Trust
The Mercian Trust
The Wings' CE Trust
Transforming Lives Education
TrustEd Schools
Unity Schools Partnership
Victorious Academies Trust
Vine Schools Trust
Vision Multi Academy Trust
Wembley Multi Academy Trust
Wembley Multi Academy Trust t
Windsor Academy Trust



 **MATs SUMMIT 2024**
IMPACT | STRATEGY | VISION

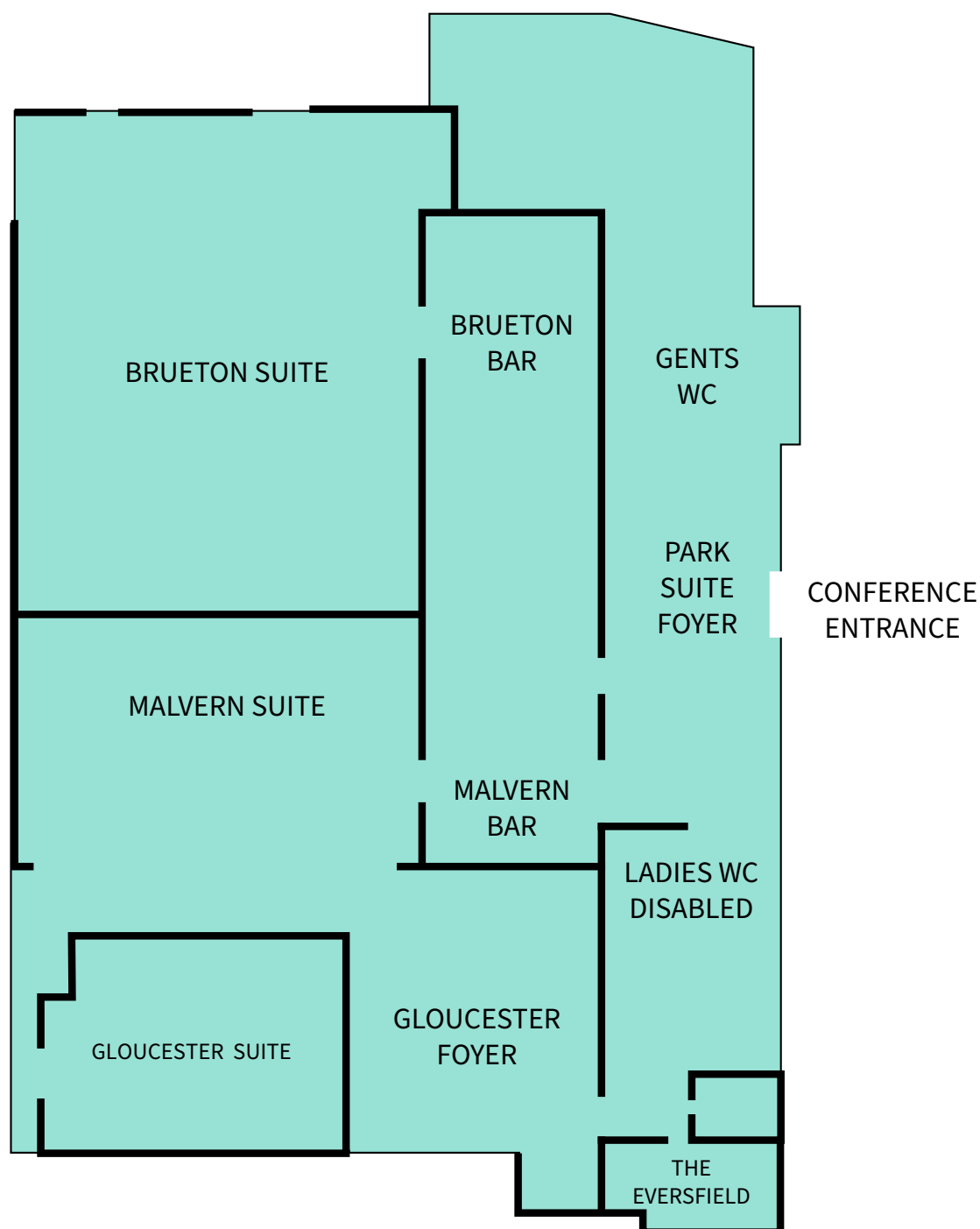
Venue: **Wyboston Lakes**

The flagship summit for multi-academy trusts returns in 2024, designed exclusively for MAT leadership teams.

SAVE THE DATE
27 – 29 November 2024

To secure your priority booking, please visit the Optimus Education stand.

Venue floorplan



Rooms we are using

Main Room: Brueton Suite

Breakout Room 1: Gloucester Suite

Breakout Room 2: The Eversfield

Exhibition & Catering: Brueton & Malvern Bar and Malvern Suite

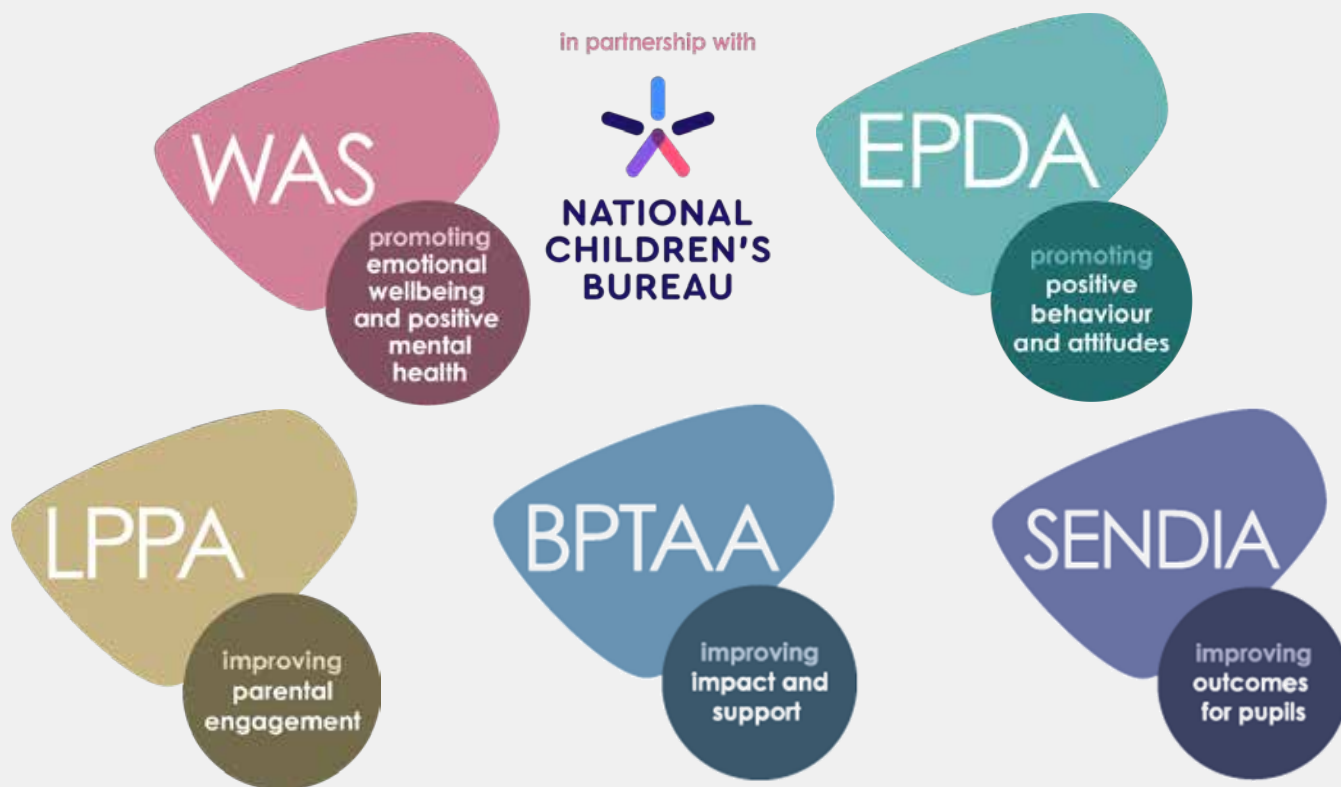
Entrance & Registration: Gloucester Suite

Committed to your school improvement



Awards that support and accredit schools for outstanding non-curricular provision

Our range of awards



What our awards offer



Whole-school approach

Involve the community and stakeholders in the change process



School improvement

Strategies and interventions that bring about positive change



Accreditation

Formal recognition that excellent standards of provision and practice have been met and evidenced



Scan here to find out more or visit our website awardplace.co.uk



Exhibitors



Supporting Education Group

E: penny.swain@supportingeducation.com
T: +44 (0) 7711 194796
W: supportingeducation.com

With over 90% of MATs in England choosing our services, we're confident that we can make a real difference to your trust.



Confederation of School Trusts

E: admin@cstuk.org.uk
T: +44 (0) 115 9170142
W: cstuk.org.uk

The Confederation of School Trusts (CST) is the national organisation and sector body for school trusts in England advocating for, connecting and supporting executive and governance leaders.



2Simple

E: hello@2simple.com
T: +44 (0) 20 8203 1781
W: 2simple.com

2Simple has been making powerful and creative educational software for learners and schools for over 20 years. We are committed to providing creative, inclusive, and inspiring software to encourage children to love learning and prepare them for later life.



Bodet Time

E: enquiries@bodet-time.co.uk
T: +44 (0) 1442 418 800
W: bodet-time.co.uk

Bodet Time offers dedicated solutions to education through class change systems, lockdown alerts, PA and synchronised clock systems.



Education Development Trust

E: randerson@edt.org
T: +44 (0) 7792045280
W: edt.org

At Education Development Trust, we improve school systems at scale and provide empowering employability and careers services to young people and adults.



Fusion Business Solutions Ltd

E: sales@feps.co.uk
T: +44 (0) 1924 907319
W: feps.co.uk

Fusion Education People Solutions provide innovative HR Services and Software, developed specifically for the sector by education HR specialists.



GovernorHub

E: polly.ferris@thekeyssupport.com
W: governorhub.com

GovernorHub is the leading provider of governance solutions in England. We support great governance – helping more than 100,000 governors, trustees and governance professionals focus on what matters: making a difference to children and young people in their schools.



IMP Software

E: Jordan.butel@impsoftware.co.uk
T: +44 (0) 7946 027 70
W: impsoftware.co.uk

We know that financial planning is critical to the success of any educational institution, and we're committed to providing our clients with the tools they need to achieve their financial goals.



Kingswood

E: ian.overhead@inspiring-learning.com
W: kingswood.co.uk

With 40 years of experience, Kingswood are experts in learning outside of the classroom. A Kingswood trip offers a sense of adventure and a taste of independence; benefits which last way beyond a child's return to the classroom.

Exhibitors



Leadership Edge

E: catherine@leadershipedge.org.uk
T: +44 (0) 7879612553
W: leadershipedge.org.uk

Leadership Coaching Training with an Edge! Instead of the 'quick-fix' offered by twilights or training days, we become your ongoing partner on this journey of cultural change.



QDP Services

E: joelacm@qdp-services.co.uk
T: +44 (0) 1625 501917
W: qdp-services.co.uk/home/index.html

Use QDP to listen to your audience, inform strategy/intervention and measure impact. QDP provide an independently managed, confidential and secure platform to ensure ALL your stakeholders are given a voice.



SAM Learning

E: sking@samlearning.com
T: +44 (0) 2070250616
W: samlearning.com

SAM Learning is the only online learning platform used by British schools worldwide, providing students access to thousands of learning activities across all major GCSE and KS3 subjects.



socialmediacheck

Social Media Check

E: nic.whelan@socialmediacheck.com
W: socialmediacheck-business.com

To meet the KCSIE guidelines for online checks for recruitment, MATs need an efficient and cost-effective tool that ensures vetting is compliant and robust.



Stir Food

E: james.colairo-moss@stirfood.co.uk
T: +44 (0) 7801 897943
W: stirfood.co.uk

We are a school catering company that loves food, encourages a community spirit, and has a mission to put pride back into primary and secondary school kitchens across the UK.



SupplyWell

E: scott@supplywell.co.uk
T: +44 (0) 333 305 0601
W: supplywell.co.uk

At SupplyWell, we're not just a staffing solution; we're a movement towards a healthier, more sustainable educational system. Our mission is to revolutionise how schools manage teacher absences, ensuring that no compromise is made on the quality of education.



Teaching Personnel

E: alison.lincoln@teachingpersonnel.com
W: teachingpersonnel.com

Teaching Personnel, part of Supporting Education Group, are the UK's leading education recruitment agency, providing teachers, tutors and support staff to primary, secondary, and special schools, academies and alternative provisions throughout England and Wales.



The Happy Confident Company

E: schools@happyconfident.com
T: +44 (0) 20 3925 9150
W: happyconfident.com

The Happy Confident Company Schools Programme equips children ages 3-14 with the social emotional skills that help prepare them for adolescence.



Westcountry Group

E: sarah@wescountrygroup.com
T: 44 (0)1752 696300
W: westcountrygroup.com

Progressive schools looking to maximise student potential through outstanding learning environments choose Westcountry Group, the leading supplier of educational refurbishments, furniture, and innovative folding dining systems.



supporting
education
group

Supporting Education Group

Empowering MAT leaders to deliver excellent outcomes for children and young people.

At Supporting Education Group, we're more than a collection of businesses offering education services. We're a team of experts who are passionate about supporting MATs to deliver the best possible education provision for their pupils.

Our high-impact, award-winning services cover everything from educator talent solutions to school financial management, and we're proud to have helped countless academies to achieve their goals.

We are proud to be partners of the MAT Excellence Awards 2024 and look forward to meeting you and exploring how we can help you to achieve real results, whether that's through improving teaching standards, streamlining your operations or enhancing your pupil wellbeing.



supportingeducation.com



Time

Lockdown Alerts, Class Change, Synchronised Clocks & PA Systems

Enabling schools to react to emergency situations,
increase learning time, improve punctuality and save costs



Broadcast live and recorded messages

Improve **safety** through **lockdown** and **evacuation**

Increase **learning time** and improve **punctuality**

Synchronise time across your school

Automate summer and winter changeovers

Contact our team to discuss
how we can support you

01442 418800
enquiries@bodet-time.co.uk
www.bodet-time.co.uk

Browse our
brochure to view
our range of solutions



When Teachers Are Absent, Is Your MAT **Reactive** or **Proactive** ?

The frantic scramble to fill unexpected staff gaps – a familiar scene in most Multi-Academy Trusts (MATs). This reactive approach, while seemingly the only option at the time, comes at a hidden cost. Disrupted learning, overburdened staff, and unknowingly drained resources – all consequences of firefighting teacher absences.

The impact goes beyond the logistical headache. Frequent changes in teachers create inconsistency in learning, potentially harming student progress scores. The burden of finding cover falls on senior leaders and remaining staff, leading to burnout and decreased morale. Don't underestimate the financial toll either. Traditional supply agencies often charge hefty fees, further squeezing already stretched school budgets.

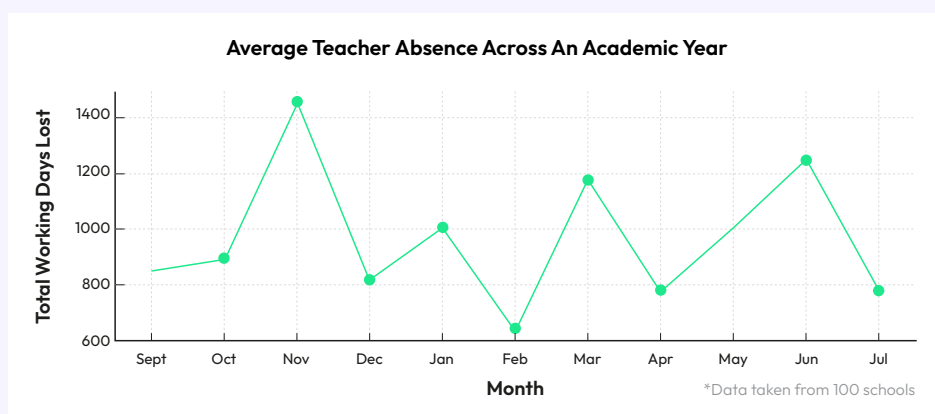
According to UK government figures, **costs to cover teacher absence across 2022/23 surpassed £698 million**. These funds could be directed towards crucial areas like learning resources, staff development,

and vital school initiatives. Compounding this challenge is a critical shortage of qualified teachers. A recent survey by the National Association of Head Teachers found that **42% of schools struggle to fill vacancies**, which can lead to inexperienced cover teachers who may unintentionally slow student learning.

“*... costs to cover teacher absence across 2022/23 surpassed £698 million.*”

There's a Better Way: A Proactive Approach to Teacher Absence

Responding rather than reacting to teacher absence involves a proactive approach that prioritises long-term solutions. By analysing historical absence data, as illustrated in the graph (left), MATs can uncover attendance trends throughout the current year and previous academic years. This foresight empowers strategic planning, ensuring adequate cover is available during peak absence periods. Planning a term or academic year in advance is crucial in this process, allowing MATs to anticipate their staffing needs and align resources effectively. Imagine a world where your schools have access to a pre-vetted network of qualified supply teachers, ready to step in seamlessly when needed. This minimises disruption and ensures students receive a consistent, high-quality education. Proactive MATs using this approach can **save up to £20k on supply costs** and benefit from reduced future absence, improved student outcomes and a happier workforce.



Ready to Be Proactive?

As time to analyse data is a precious commodity, SupplyWell offers a complimentary absence audit powered by Absence AI™ technology. Book your audit today and discover how much your MAT could be saving.

Scan the QR code or [Click Here](#)



Time to think differently about school accreditation

Focusing on impact and making positive changes within your school



PUPIL WELLBEING AWARD

Support and improve physical, emotional and mental health for all pupils



OUTDOOR LEARNING AWARD

Help pupils grow in confidence and skills through learning outside



PUPIL RESILIENCE AWARD

Build and strengthen resilience, self-belief and confidence in all pupils

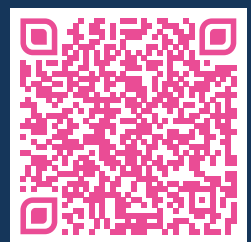


STAFF WELLBEING AWARD

Support and improve physical, emotional and mental health for all staff

Drive school improvement today by visiting the new website or visit the Optimus Education stand today

VISIT WEBSITE



Get SEMH strategies that work... when behaviour gets in the way of student success.

With SEMH needs rapidly increasing in schools, it's more important than ever that your teaching staff have all the knowledge and training they need to create successful, inclusive classrooms that maintain high standards.

That's why our online CPD programme features:

- ✓ Unlimited access to 47 training modules and resources covering topics like PDA, ODD, trauma-informed practice, anxiety, ADHD, autism, school-avoidance, classroom management and more.
- ✓ Written by teachers, for teachers, each module is full of research-backed, practical strategies your staff can easily understand and start using straight away. With always-on access, it feels like there's an SEMH & behaviour expert working in your school, 24/7!
- ✓ We even offer an on-going, bite-sized training programme for your lunchtime supervisors and a 12-week support programme for parents about how to help their children manage their emotions.
- ✓ Say goodbye to delays and waiting for outside experts. Now you can get support when your stakeholders need it. It's like having the SEMH answers you're looking for, on tap.
- ✓ To find out how we can support your school to reach its behaviour and SEMH goals, ring Emma on 07534 331 857 or visit beaconschoolsupport.co.uk.



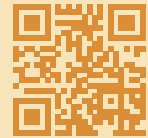
Beacon
beaconschoolsupport.co.uk
07534 331 857



Community Playthings

Environments for
Schools and Nurseries

Scan to see our full
product range:





STEM ON TRACK

The Project



BUILD

The 1 year programme includes shipping kart kits directly to schools, allowing students to engage in a hands-on learning experience week by week as they construct their own karts, fostering real-world skills along the way.



LEARN

Our online platform offers a step-by-step interactive guide to kart construction, 50+ STEM courses that relate to the build and align to the national curriculum. With supporting webinars to ensure a comprehensive learning experience for students.



RACE

The STEM Prix serves as the project's grand finale, offering schools the opportunity to showcase their efforts and racing skills in a final event that celebrates their journey through STEM education and kart building.

Simple and Innovative Project Delivery

- ✔ Full Racing Kart Kit and tools delivered for free anywhere in mainland UK.
- ✔ No specialist skills or training required by staff to facilitate.
- ✔ Dismantlable Kart to be used year-on-year and renewable digital learning subscription.
- ✔ Students are given assistance to secure sponsorship, ensuring ownership and sustainability of the project.

About Espire Education

Espire exists to bring STEM learning to life.

Using real-world automotive engineering & Motorsport principles to provide students with an answer to the question: "when will I ever use this in real life?"

CONTACT US

📍 19 King Street, Long Buckby, Northampton, NN67RP

+44 7814 274241

adam@espireeducation.co.uk

GO 4 Schools

"Since implementing GO 4 Schools in November 2020 it has revolutionised the way all stakeholders at our school use data."

Nicholas Bloom—Assistant Headteacher at Deira International
(BSO Outstanding | KHDA Outstanding)



**Make better decisions
with today's information.**

**Use GO 4 Schools
modules with your MIS.**

**2025/26 GO 4 Schools
MIS fully integrated into
your school.**

Think about a new approach to school systems. GO 4 Schools is:

- A one-stop-shop for teachers, built for teachers to easily access live data for school improvement.
- Built on the expertise of teachers and developed through school requests .
- Powerful and easy to use, suiting the people in your school and their job roles.
- Consistent and flexible to reflect the way your school wants to work.
- Developing inhouse, customer driven MIS elements for the administration of student, staff and curriculum data .
- A comprehensive, powerful, parental and student engagement tool.
- A World Class Schools Supplier.
- Approved by staff, parents and pupils, scoring best as an admin and productivity tool with an 82%, 85% and 87% approval rating*.

* Edurio Covid Impact Review

www.go4schools.com



[@GO4SchoolsHSL](https://twitter.com/GO4SchoolsHSL)



[Facebook.com/triangulatedata](https://www.facebook.com/triangulatedata)



[GO 4 Schools](https://www.linkedin.com/company/go4schools)

Reduce workload and improve student outcomes

Increase Job Satisfaction and Retention

Through Personalised Staff Development

Provide adaptive PD for every teacher

Put your teachers in control of their professional development and allow them to embark on a self-reflective, collaborative or coaching journey that's suitable to their specific needs and domain knowledge.

&

Create a collaborative professional learning culture

Enable staff to share practice at the click of a button, ask for feedback and asynchronously collaborate towards common goals - not only improving outcomes, but more importantly providing a strong support network in a stressful environment.

Facilitated with IRIS Connect's market-leading PD solution

Find out more: www.irisconnect.com/uk

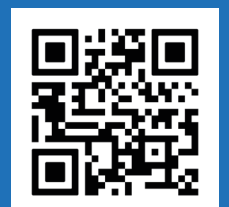
"One thing we wanted to achieve with IRIS Connect is to have our teachers see their own strengths and areas for development without always being told. Our staff now have autonomy over what they choose to look at and they have a chance to achieve real mastery over their teaching."

Rosebery School, Epsom



info@irisconnect.com | www.irisconnect.com/uk

Scan for Rosebery's case study:



Give them confidence, **resilience** and life skills



Award-winning **outdoor
adventure residentials**
for all ages



36%
increase in
resilience

Impact Analysis
2023

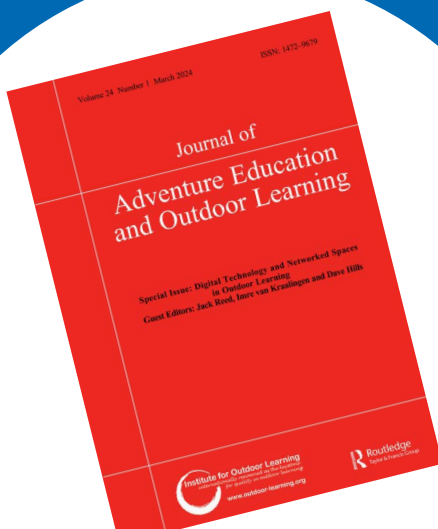


Skills Builder
Practising
essential skills

2023-24

Read our latest research in **The Journal of Adventure Education & and Outdoor Learning**, an official, peer-reviewed publication of the Institute for Outdoor Learning.

‘Building resilience and well-being for post-covid adolescents through outdoor adventure’
By Dr John Allan, Head of Impact and Learning at Inspiring Learning



Five-star first aid services for every academy in your MAT

Rated 'Excellent' on



We understand that today's MATs face many challenges. Staying compliant, improving mental health, optimising financial performance, finding the right level of centralisation – and more.

Benefit from economies of scale and see how our Trustpilot five-star rated training and support can help your MAT save time, money – and lives.

-  **Significant discounts** – every academy can enjoy savings on training and supplies when you buy as a MAT.
-  **HSE compliance** – stay compliant across all academies with high quality training and resources.
-  **Dedicated account manager** – your account manager can reduce admin and provide ongoing support.
-  **MAT-wide overview** – quickly view your MATs provision, savings reports and spend analysis.



**"Hi, I'm Briar and I can help
you unlock MAT-wide savings."**

Call: **01733 842937***

Or email: **briar.farrell@sja.org.uk**

➤ **Visit our website**

* Lines are open Mon-Fri: 8.30am – 4.30pm



FREE ONLINE TRAINING & RESOURCES

**£250
VOUCHER
FOR EVERY
SCHOOL***

- Engaging primary and secondary school teacher training courses
- Inspiring personal development and leadership content
- Innovative curriculum-linked lesson plans and videos

Find out more at lta.org.uk/schools

*Limited to one per school



Stir.

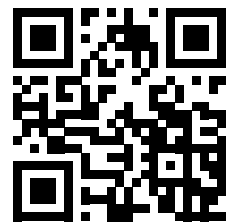
let's eat, together

Stir is exclusively a school catering company and has entered the market to reignite inspiration and joy in school kitchens across the UK.



We create food for our young customers that stands out from the crowd to create a real stir in the dining room.

We would encourage anyone looking for a new catering partner that is reading this to check us out and get in touch www.stirfood.co.uk



Scan me

Apple Learning Institute



Apple Learning Institute is a two day course which allows education leaders to step back and analyse their current approach to 'digital'. During the course, every participant will develop a Digital Learning Plan that is personalised to their school, enhance their digital and leadership skills to ensure the plan is realised, and on completion walk away with Apple Learning Leader recognition

Through a mix of interactive workshops, our team will work with you to shape best practices across your school and embrace digital initiatives, exploring how to effectively utilise Apple technology in the classroom and across your institution.



Engage

Attend 2 professional learning sessions and complete the ALI workbook.



Create

Develop a focussed Digital Action Plan and implement this within your institution.



Present

10 minute reflection to the group outlining findings and next steps.



Visit our website to discover how we can support your institution.

wearesync.co.uk

“Thank you for the experience! I have reflected so much and it has given me a new lease of life. The discussion with other practitioners about their experiences was invaluable”

Alice LeFeuvre, Lady Barn House School