

GANGS & COUNTY LINES

PRESENTED BY SOS+



WHO WE ARE & WHAT WE DO

OUR IMPACT

Last year, we helped 24,432 people across England and Wales with our **award-winning services**. For many of them, St Giles Trust was the only place they could turn to. These are our headline achievements for 2016/17



£8.34

Saving to the taxpayer for every £1 invested in our Peer-led services



24,432

People helped in 2016/17



393

Number of people who trained as Peer Advisors in 2016/17



3,016

People housed in 2016/17



618

Number of people helped into work in 2016/17

SOS PROJECT:

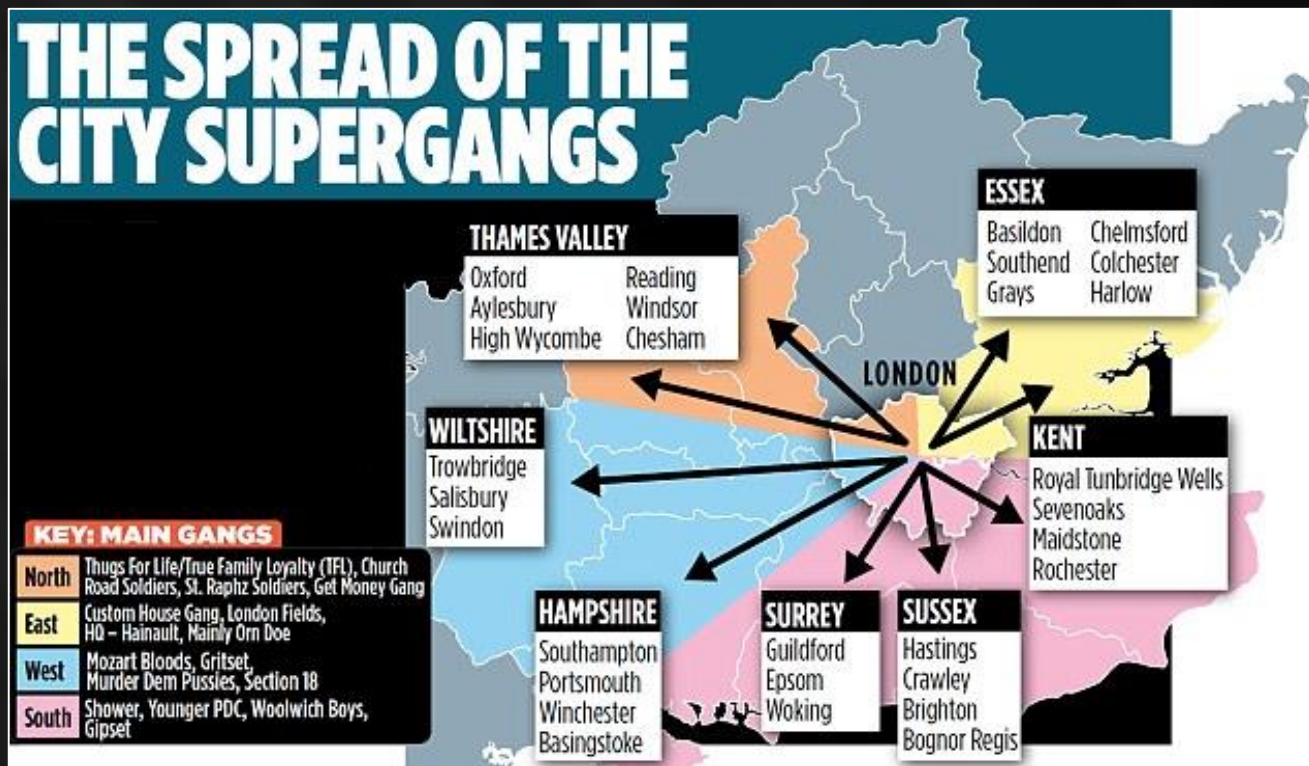
Offers intensive help to young people exposed to or at risk of violence, vulnerability and exploitation. The work encompasses gangs work and family support as well as child exploitation and human trafficking.

SOS+ PROJECT:

Prevents disadvantaged young people becoming involved in gang crime and serious youth violence. It offers interactive sessions in schools, pupil referral units and colleges which offer practical tools and knowledge to young people on how to steer clear from violence and crime

WHAT IS COUNTY LINES?

“County lines” - In the criminal world ‘County Lines’ is referred to as; Country, Cunch, O.T, Out There, Out of Town, Upsuh and various other colloquialisms. Drug Operations/phone lines are set up in regional areas by Entities most commonly originating from major cities. Young people are being exploited as couriers, runners and taking up other functional roles.



WHAT IS CUCKOOING?

A crime where a drug dealer befriends a weak, old or otherwise vulnerable person, then takes over their home and uses it as a crack house.

"Cuckooing involves a drug dealer befriending a vulnerable individual who lives on their own.

Like a cuckoo, the dealer moves in, takes over the property, and turns it into a drugs' den."



DIFFERENT PERSPECTIVES: PERSPECTIVE OF DRUG DEALER



**“ALL I CARE ABOUT IS MY MONEY!
THESE YOUNGERS ARE
VULNERABLE, DISPOSABLE &
REPLACEABLE”**

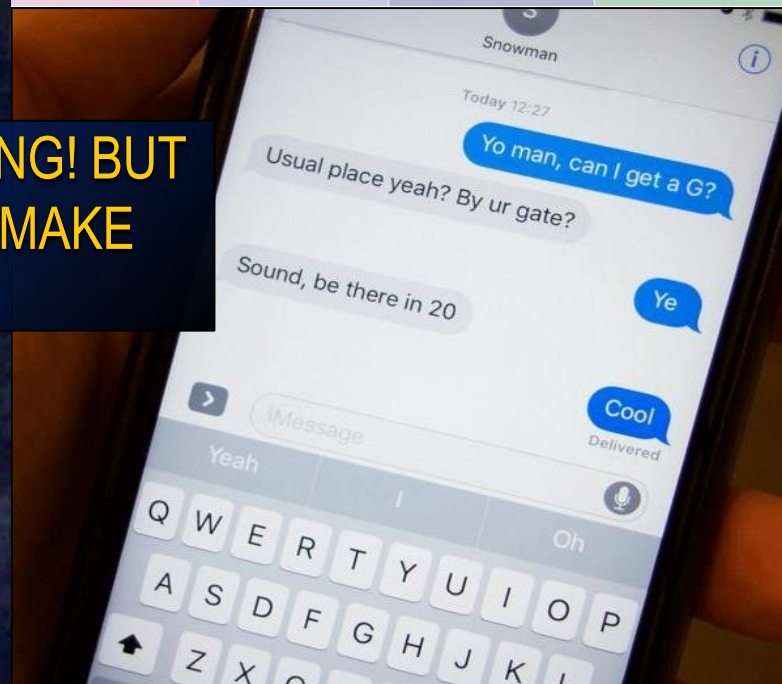
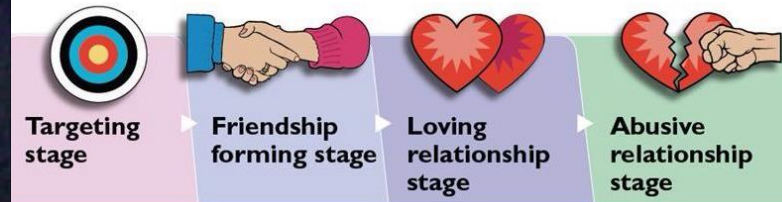


DIFFERENT PERSPECTIVES: PERSPECTIVE OF DRUG DEALER



“GOING COUNTRY IS LONG! BUT HOW ELSE AM I GONNA MAKE SOME QUICK CHANGE?”

The Grooming Line



Exploitation

Many young people are groomed and exploited to supply/store drugs as runners and mules.



Glamorised & Normalised

Not every young person is being groomed or exploited. Many young people are attracted to the idea of County Lines and willingly approach older drug dealers to recruit them.

PURPOSE & MOTIVES: WHAT MAKES IT APPEALING?

External:

- Money
- Respect
- Peer pressure
- Glamorised through word of mouth, social media etc.
- Easy option to make money

Internal/Root Issues:

- Low self esteem
- Vulnerable and easily influenced
- Social/economic factors
- Lone parent families
- Lack of positive role models
- The need to feel accepted, significant and secure
- Provides a sense of belonging, identity and purpose
- Provides empowerment, worth and value.



REALITIES & CONSEQUENCES



NO SLEEP

Drug runners have no shift patterns and can go up to 72 hours with no sleep .



POOR LIVING CONDITIONS

As the trap house is most commonly 'Cuckooed' electricity and water bills are unpaid resulting in poor living conditions. Runners have poor nutrition and bad hygiene.

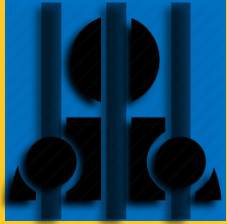


CSE & AUXILLARY HEALTH RISKS

Trap Houses/Drug dens can be harmful environments infested with used syringes, excrement and blood. Many under 18's are used for sexual favours to pay off debts etc.

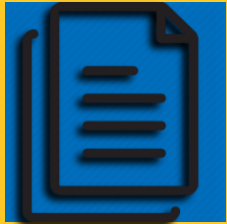


REALITIES & CONSEQUENCES



PRISON

Prison sentences for intent to supply Class A drugs can be severe depending on the role you play and the amount you possess.



CRIMINAL RECORD

If you have a criminal record you might not be accepted into a college or university, get a job, or travel to some countries, like the USA, Canada or Australia.



DEBT BONDAGE & MODERN DAY SLAVERY

Modern Day Slavery Act (2015) is valid when a young person is trafficked for the purposes of exploitation.

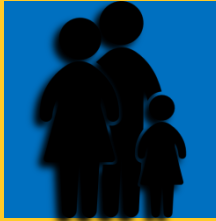


REALITIES & CONSEQUENCES



RIVAL GANGS & DRUG USERS

Drug runners are most vulnerable as they're at the bottom of the food chain and are susceptible to being targeted and violently attacked by rival gangs/drug users.



FAMILY MEMBERS TARGETED

OCG's and Gangs can target family members to threaten or retaliate on drug runners as an exploitation tactic.



SERIOUS INJURY

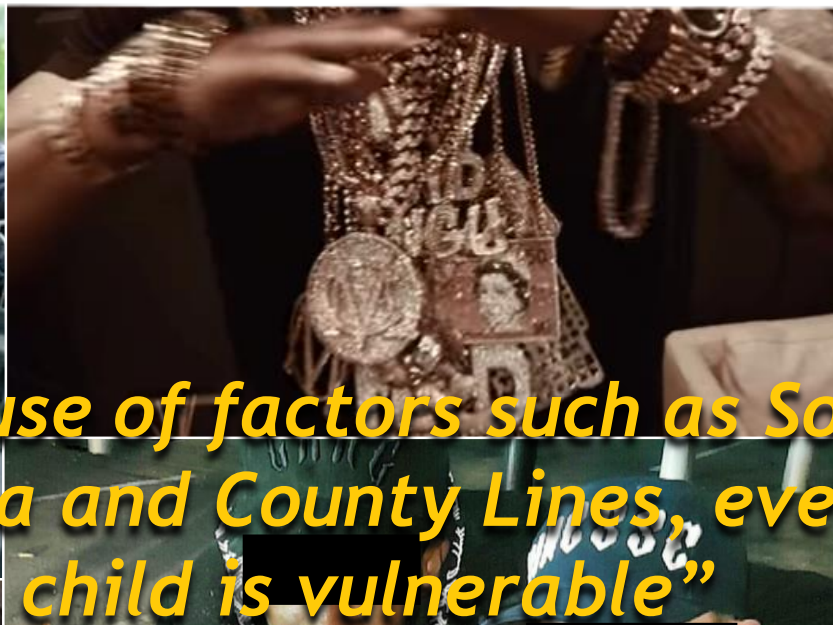
Violence is a central theme in County Line cases leading to serious injuries involving kidnaping, gun & knife crimes, acid attacks etc.

SIGNS AND INDICATORS:

- More than one phone (Old, disposable phone)
- Large amounts of cash that's unaccounted for
- New expensive belongings e.g. Clothes, watch, jewellery, gadgets
- Increased staying out and sleep overs at "friends houses"
- Unexplained absences at school
- Paraphernalia - bags, cling film, rubber bands, digital scales, Vaseline, baby wipes.
- Presence of unexplained items; Knife / mobile chargers / dongles / cash / mobile data/credit (Lycamobile), Train tickets, Scrunched up cling film & foil,
- Slang words used in conversations such as; G-pack, pack, traphouse, trap, bando, feds, nitty(s), crackhead(s), cat(s), boodge, Q's, Z's, 2 in a shoe, ounce, rack, score, pinky.
- Change in friends
- Gang affiliations
- Becoming withdrawn and secretive e.g. Withdrawal to bedroom all day; suspiciously keen on door being closed.



THE GLORIFIED 'LONDON GANGSTER'



• *“Because of factors such as Social Media and County Lines, every child is vulnerable”*

KENT CASE STUDY



In 2017 St Giles Trust commissioned an SOS Case Worker to offer support & intervention to clients specifically involved in County Lines in Kent. The Case worker worked with 26 YP's who were exploited to work predominantly as runners and transporters for gangs and drug networks originating from Liverpool and London.

KEY FACTORS

- 4 out of 26 clients were London based, 22 were local
- All locals were white
- Only 2 out of 26 had dads present in their life
- 1 girl to 25 boys
- All clients were in PRU's (Pupil Referral Units) and on a 'twilight timetable'
- High levels of Serious Youth Violence and CSE
- 5 clients in 6 months were supported back into mainstream schooling/employment

MARGATE CASE STUDY: EXHIBIT A



PROFILE

- London North West based gang (Brent)
- Used heroine addicts property as the 'Trap House'
- Known for being manipulative and abusive to workers
- High cases of serious youth violence and CSE
- Active and infamously known through social media and music industry which plays a big part in influencing vulnerable locals with warped notions.
- A well known established gang.

MARGATE CASE STUDY: EXHIBIT B



PROFILE

- Liverpool based OCG (Organised Crime Group) or Drug Network
- Been established in Margate for 30-40 years
- Use Air B&B's as 'Trap House' and change location frequently
- Known for looking after workers financially and socially
- Not known to be an established gang

COMMON MISCONCEPTIONS:

Existing Lines vs Freelancers: *Not every County Line is established in an area. The riskiest lines are ones that are set up by ambitious freelancers (most commonly younger drug dealers trying to make it to the big leagues). These freelance type drug dealers will come into a town and try to pioneer a drug line without any local connections, resources or prior research. This is risky as they are seen as imposters by established county line gangs and are targeted immediately.*

Voluntary drug runners: *Not every young person is being groomed or exploited. Many young people are attracted to the idea of County Lines and willingly approach older drug dealers to recruit them.*

Complex Cases: *Not every case is the same. Although there are common factors that can be identified in county lines cases but every individual has specific circumstances that need to be taken into consideration.*

Intervention (Holistic Approach): *Many professionals and organisations only focus on helping the exploited young person and ignore the perpetrators who also need help.*

Runners Don't have a profile: *Runners and couriers don't fit the conventional profile. Our frontline work proves that every child is vulnerable and any child can be involved.*

THANK YOU FOR YOUR PARTICIPATION
FOR SLIDES AND FURTHER INFORMATION/RESOURCES
CONTACT:

ARNOLD.YOUSAFA@STGILESTRUST.ORG.UK