

**19  
Mar  
2024**

The Lowry Hotel,  
Manchester

**Increase trust capacity and  
drive improvement while  
prioritising risk management  
in a time of uncertainty.**

# Building a High Quality Trust

## EXPERT SPEAKERS INCLUDE:

**Liz Anderson**

Education Leadership  
Consultant, Former Trust CEO

**Paul K. Ainsworth**

Education Director,  
Infinity Academies Trust

**Jonny Uttley**

CEO,  
The Education Alliance

## Collaboration

Connect with other trusts in your region to learn from mistakes and benefit from successes.

## Stability

Ensure you retain key staff, have clear succession protocols, and monitor your trust capacity.

## Quality

Evidence your strengths clearly and improve weaknesses to boost your trust's reputation.



# Why attend this event?

**“It is for the sector to identify and implement the most effective approaches to achieve them.”**

Annex A,  
Trust Quality Descriptions

Following the release of the trust quality descriptions, it has been left in the hands of trust leaders across the country to determine how to effectively and efficiently ensure their own success.

Building a High Quality Trust is a free opportunity to hear from your contemporaries on what systems are working well, and what hurdles others have faced on their journeys. Whether you are new in role or are an experienced leader, this is a valuable chance to discuss: growth, governance, school improvement, succession, collaboration and financial planning. You will take away high impact strategies for your long-term vision and time-saving tips to ease your everyday worries.



## The benefits

### Growth

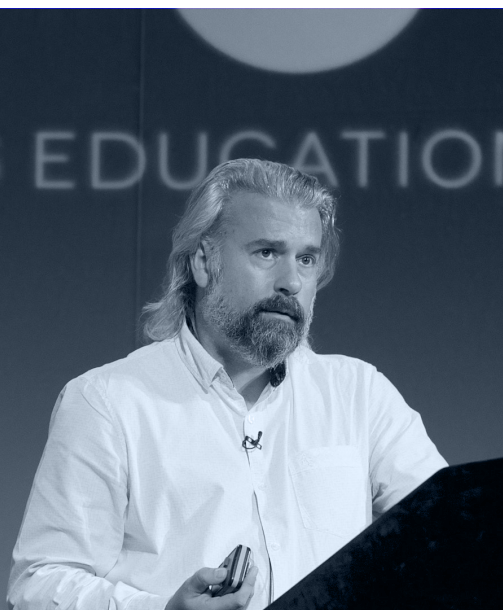
Ensure your growth intention is aspirational while understanding your capacity to mitigate risk.

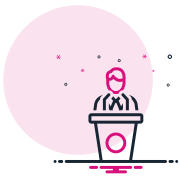
### Retention

Save time and money by installing realistic benefits and enticements to keep your top performing staff in key roles.

### School improvement

Drive your agenda with clear cross-trust collaboration, sharing lessons learned to benefit all your academies.





# Speakers



**Liz Anderson**

Education Leadership Consultant,  
Former Trust CEO



**Paul K Ainsworth**

Director of Education,  
Infinity Academies Trust



**Jon Tait**

Director of Education,  
Northern Lights Learning Trust



**Mark Unwin**

Chief Executive Officer,  
Create Partnership Trust



**Jonny Uttley**

Chief Executive Officer,  
The Education Alliance MAT





# Programme

19 March, The Lowry Hotel, Manchester

**09:00 – 10:00** Registration, refreshments, and networking

**09:55 – 10:00** Welcome and housekeeping from Optimus Education – part of Shaw Trust

**10:00 – 10:20** Chair's welcome and what's your growth intention?

*Liz Anderson, Education Leadership Consultant, Former Trust CEO*

**10:20 – 10:50** Lessons from trust growth

Discover pitfalls and successes from recent trust growth, including how an approach was made and how the integration process occurred.

**10:50 – 11:10** Evidencing quality: what do you need in place?

Ensure that you can prove strength against the trust quality descriptors as you focus your improvements.

**11:10 – 11:20** Q&A

**11:20 – 12:00** Morning refreshments, networking, and exhibition

**12:00 – 12:50** Workshop choices 1

**1a: Create a robust three-year financial forecast**

As your trust grows, have an effective and efficient long-term strategy in place for stability.

**1b: Develop and retain high-performing staff**

Create an innovative professional learning programme that attracts staff and furthers their growth.

*Jon Tait, Director of Education, Northern Lights Learning Trust*

**1c: Effective risk management**

Take away a risk assessment process that is fit for purpose and covers both school and corporate issues.

**12:50 – 13:45** Lunch, networking, and exhibition

**13:45 – 14:35** Workshop choices

**2a: Community collaboration**

Deepen roots in your communities, connecting with families and other trusts to strengthen your impact and improve your visibility.

**2b: Drive school improvement with trust communication**

Drive your improvement agenda with clear collaboration between your schools, ensuring lessons are learned and shared.

*Paul K. Ainsworth, Education Director, Infinity Academies Trust*

**2c: Enhancing governance**

A perspective on a leader's role in empowering trustees with quality assurance, compliance, and strategic insight

*Mark Unwin, CEO, CREATE Partnership*

**14:35 – 14:55** Afternoon refreshments, networking, and exhibition

**14:55 – 15:30** Resilient organisations start with strong succession plans

Develop the next leaders in your trust so you can backfill in case of trust growth, promotion, departure, or absence.

*Jonny Uttley, CEO, The Education Alliance.*

**15:30** Conference close



*'Another quality day with great speakers and exhibitors. I know I can trust Optimus to deliver quality and worthwhile CPD.'*

**Chief Executive Officer,  
Priestley Academy Trust**

*'One of the best free events I've attended – glad we did.'*

**Finance and Operations Director,  
Leading Learners Trust**

# Building a High Quality Trust.

Tuesday 19 March 2024 - The Lowry Hotel, Manchester

## PRICING

To apply for your free place, book at:

 [oego.co/Build-a-Trust](https://oego.co/Build-a-Trust)

 **020 8315 1506**

 [oe.conferences@optimus-education.com](mailto:oe.conferences@optimus-education.com)

### What's included in your delegate package?

- Additional resources, curated for your job role.
- Choice of multiple workshop sessions to tailor your day to your needs.
- Free lunch, with tea, coffee and refreshments provided during morning and afternoon breaks.
- Downloadable copies of presentation slides from every speaker's session.
- Contact with providers who can assist in your setting.
- Access to trust experts and leading practitioners.
- Networking opportunities with peers so you can establish best practice.
- High quality programme based on extensive research and delegate insights.

For assistance with your free places, please contact Amy Ward on [amy.ward@optimus-education.com](mailto:amy.ward@optimus-education.com)  
Please note that this registration is for MAT staff only. If you are a business, please contact Kate Greedy on [sponsorship@optimus-education.com](mailto:sponsorship@optimus-education.com) to find out more about exhibition opportunities.

@OptimusEd

#oeMATs

[oego.co/Build-a-Trust](https://oego.co/Build-a-Trust)



**OPTIMUS** EDUCATION  
part of **shaw trust**