

**18
Jan
2024**



**12
Mar
2024**



**Online conference and leading
inclusive provision webinars**

SEND Leadership

EXPERT SPEAKERS INCLUDE:

Ginny Bootman

SENCO and Author

Natalie Packer

Education Consultant, SEND

William Cannock

Trust SEND Lead, The Charter Schools
Educational Trust

Inclusion

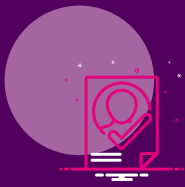
Ensure high quality provision that supports all students with additional needs

Wellbeing

Manage your workload, avoid burnout and inspire your team

Update

Stay up to date with the latest national context, developments and strategies



Why is this conference relevant?

Develop your strategic oversight of SEND and lead an inclusive culture that allows your pupils and team to thrive.

Join other SEND leaders for the SEND Leadership conference consisting of two online morning modules full of high quality presentations and discussion.

Increase your learning by attending three 90-minute webinars focusing on leading inclusive practice in areas such as emotionally based school avoidance, ADHD and dyslexia.

- Deepen your leadership of your whole school approach to inclusive provision.
- Gain impactful, time-saving tools and techniques.
- Benefit from insights from other inclusion leads, build connections and network with other SEND professionals.
- Enhance the high quality teaching your setting provides with new



The Benefits

Strategy

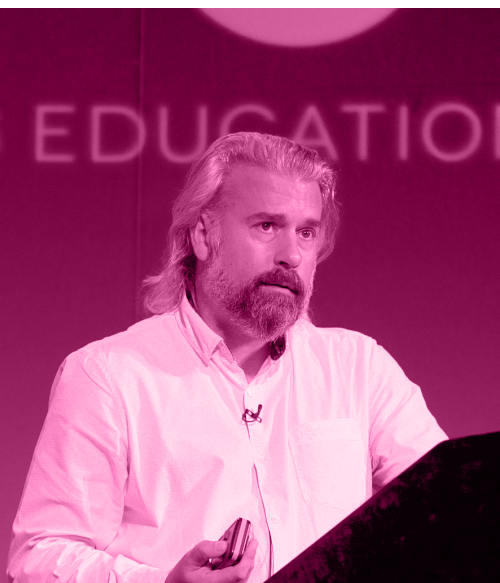
Strengthen the school-wide leadership of SEND, ensuring all staff are supporting students in the best way possible.

Knowledge

Deepen your understanding of specific learning needs to enhance your provision.

Innovate

Gain new strategies to develop your school's high quality teaching, with supportive apps and technology.



SEND Leadership Programme:

Module One: 25 January 09:00 – 11:30 GMT chaired by Natalie Packer

09:00 – 09:35	SEND Update Key information and guidance surrounding additional needs provision. <i>Natalie Packer, Education Consultant, SEND</i>
09:35 – 10:10	Implementing an inclusive culture Create an inclusive culture where staff are confident in teaching students with SEND and students feel safe, secure and supported. <i>Nicole Dempsey, Director of SEND and Safeguarding, Dixons Academies Trust</i>
10:10 – 10:45	Empower your teams Maximise your staff's skills and support your team's development goals. <i>Sara Alston, Consultant and Trainer, SEA Inclusion and Safeguarding</i>
10:45 – 11:20	Supportive technology Increase accessibility for your students with apps and technological advances. <i>Kirsteen Steven, Assistive Technology and ASN Teachers, CALL Scotland</i>

Module Two: 1 February 09:00 – 11:30 GMT chaired by Ginny Bootman

09:00 – 09:35	Workload and wellbeing Strategies to manage your own time whilst looking after your wellbeing. <i>Ginny Bootman, SENCO and Author</i>
09:35 – 10:10	Drive high quality teaching in your setting Ensure all students have access to high quality teaching before additional provision is needed. <i>William Cannock, Trust SEND Lead, The Charter Schools Educational Trust</i>
10:10 – 10:45	Be the voice of SEND in your school's leadership Review your role as part of school leadership and ensure that additional needs provision is prioritised and supported by all. <i>Kenny Wheeler, SEND, Inclusion and Leadership Consultant</i>
10:45 – 11:20	Inclusive classrooms Design the spaces your students work in to increase accessibility and reduce sensory overload. <i>Shahana Knight, Founder and Director of TPC Therapy Ltd</i>

Leading inclusive practice webinar programme:

Webinar one (18 January, 10:00-11:30 GMT) Making sense of emotionally based school avoidance (EBSA) Understand the complex aspects of school avoidance behaviours and support children to rebuild their resilience to attend school. <i>Dr Jerricah Holder, Child and Educational Psychologist</i>
Webinar two (7 February, 10:00 - 11:30 GMT) Leading literacy support Ensure your literacy interventions have maximum impact in improving outcomes for dyslexic learners. <i>Anne Sheppee, Neurodiversity Consultant and Dyslexia Specialist</i>
Webinar three (12 March, 10:00 - 11:30 GMT) Supporting neurodiversity: ADHD and emotional regulation Increase your understanding of ADHD and how you can support self-regulation methods. <i>Suzy Rowland, Founder, Happy In School Project</i>

BOOK TODAY

Oego.co/SEND



'I like being able to attend this informative and affirming conference online, without taking travel time. I have come away with lots of new resources.'

SEND Leadership delegate

'This is one of the best conferences I have attended, very informative and excellent speakers.'

Secondary SENCO, St George's International School

SEND Leadership

18 January - 12 March 2024

PRICING

Prices	SEND Leadership conference plus three leading inclusive practice webinars	SEND Leadership conference only
All school types	£350 + VAT	£219 +VAT
Elite and Unlimited Members	One place included in your membership. Contact your account manager for discounts on multiple places.	
Premium Members	Contact Maria.Connor@optimus-education.com	

@OptimusEd

#oeSEND

oego.co/SEND

 **OPTIMUS** EDUCATION
part of **shaw trust**